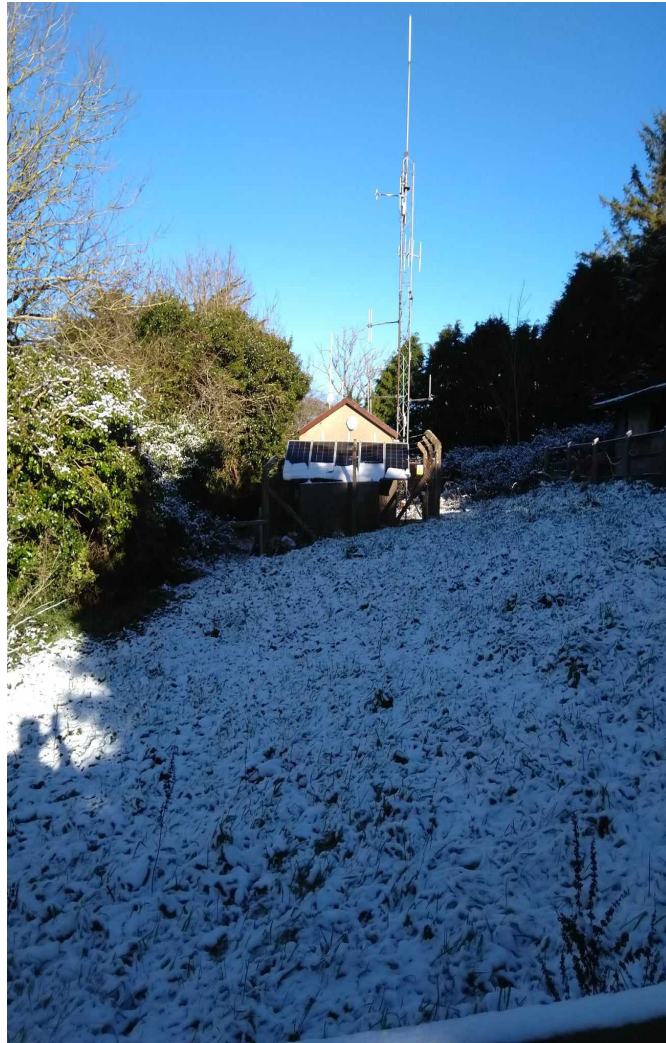


# Great Hill the home of TR & TQ



# Home of TR and TQ



# TR and TQ Aerials



# Home of TR and TQ

- Solar Panels installed in 2023



# TR History

**The repeater Facebook Page is:**

**GB3TR Torbay 2m Repeater**

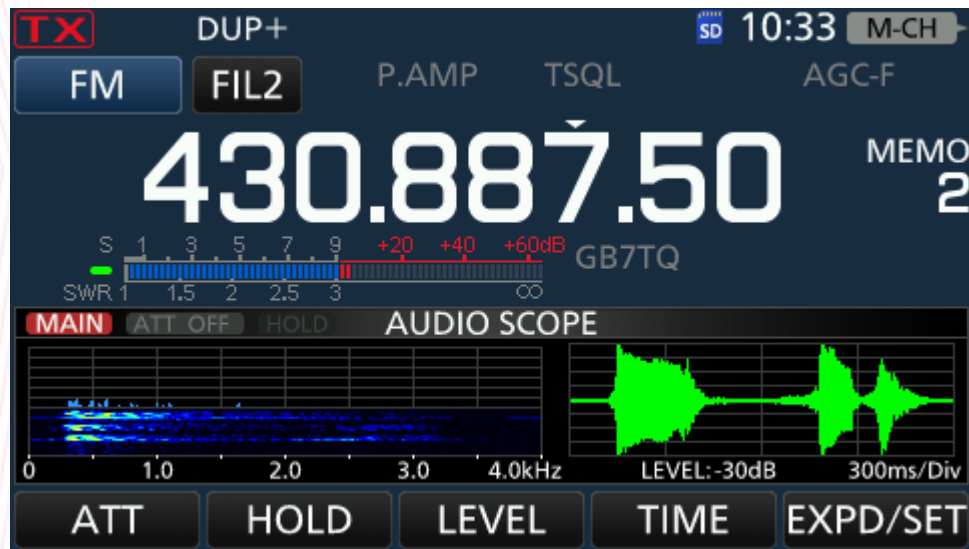
On which a complete history can be found under:- Files

Please feel free to browse that file.

From its beginnings in the late 1970's this repeater has been through quite a few changes. These changes were not only completed by the people involved in constructing the RF and Mechanical side of things, there is a very long list of those, but also the various sites, antenna and actual RF equipment itself.

When GB3TR first went on the air from the garage in the garden of a bungalow belonging to Steve G4EDG on the 29th March 1980 it was almost a wonder to behold, for those there at the time. None had ever worked on a repeater before and the whole thing had to be put together in an almost true "Amateur" way.

# TQ Equipment



# TR Equipment



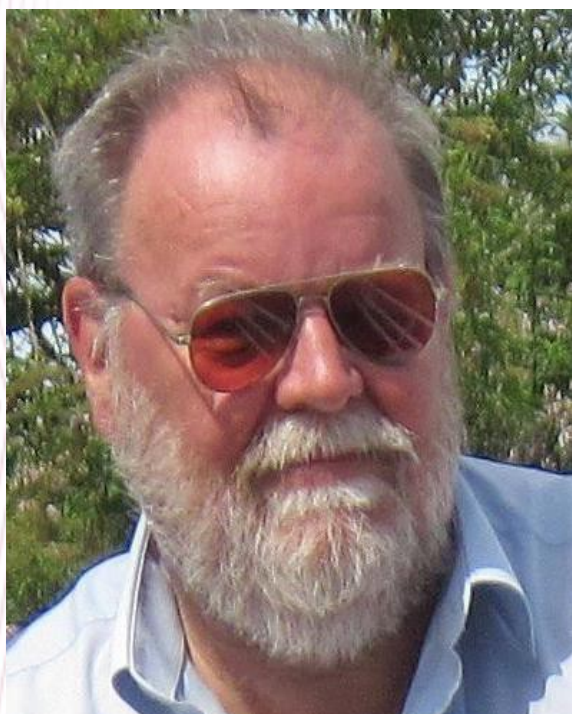
# **Repeater Keeper**

## **Bill G8XST**



# Backup Team TR Group

**Colin G4FCN   John G4VUD   Dave G0DDF**

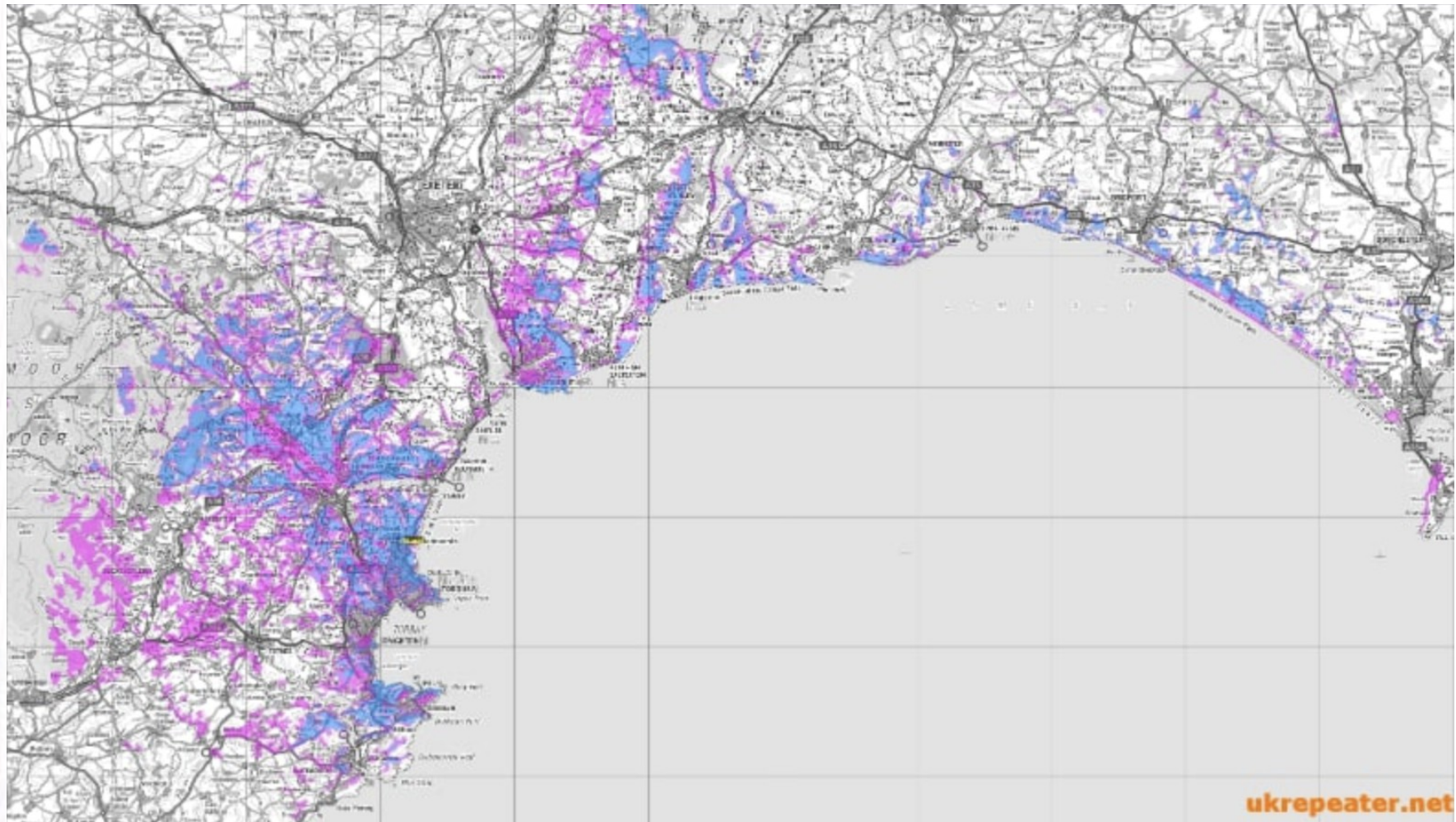


# Backup Team TQ

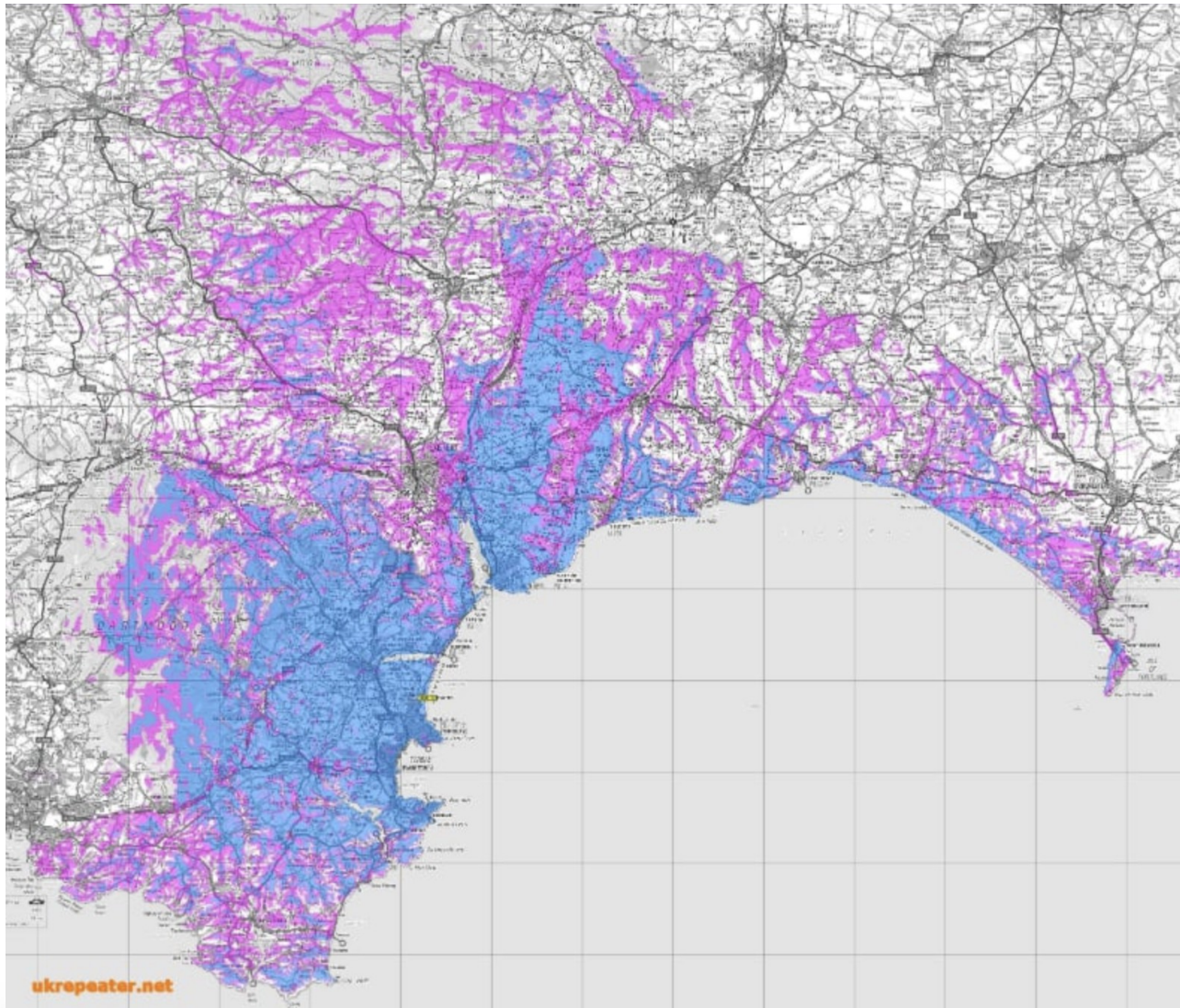
Ian G6TEQ Ian M0IDP Chris 2E1WLL



# TQ Coverage



# TR Coverage



# Costs

- The annual cost of running a repeater can average £5000, per year and is increasing year on year.
- Commercial sites are all in excess of £25k.
- Building Maintenance,
- Power,
- Business Rates Liability,
- Equipment Maintenance,
- Antenna Rigging,
- Insurance,
- *Are all examples of the many costs incurred.*

# Fundraising Activity

Both TR and TQ rely on a huge amount of support from it's Donors who help underwrite a significant amount of the running costs, even a small donation makes a big difference!

If you enjoy using these repeaters and would like to contribute towards the running costs to help keep GB3TR operational, your donations will be more than welcome.

An unwritten rule:- is that Amateurs who support their local repeater are entitled to use repeaters across the country.

Donations always gratefully received:-

For GB3TR via PayPal to [gb3tr@wysebyte.plus.com](mailto:gb3tr@wysebyte.plus.com)

(Please use 'Friends and Family' method of payment to make sure the whole of your donation goes towards the repeater).

Alternatively, if you would prefer to pay by cash, cheque or set up a small standing order please contact us using the this email for details. [cjc at btinternet dot com](mailto:cjc@btinternet.com)

# Setup Info for Your Radio

Radio Setup Information		
	TR	TQ
Output Freq	145.650	430.8875
Input Freq	145.050	438.4875
CTCSS	94.8	94.8
Yaesu Fusion	Yes	Yes
Locator Sq	IO80FM	IO80FM
ERP	11.3dbW	10.5 dbW
RSGB Region	11.000	11.000
Latitude	50.48	50.48
Longitude	-3.53	-3.53

# Demonstration and Operating Guidelines

Perhaps a discussion at this point around operating guidelines bearing in mind the difference between.

Primary Mobile use?

Home use?

National Mobile Phone laws?

Good etiquette of course will require the Repeater to be returned to it's normal operating mode, after being in C4FM at the end of your contact

As before the upgrade GB3TR also has IRLP, and requires 73 to be sent after using IRLP.

Enjoy using the Repeaters and make good use of them.

# **Contributors**

**A huge 'Thank You' to  
our Donors and support  
teams for their continued  
support over many years.**